

Water Analyser

Overview

Analysing meters are mainly used for the measurement and surveillance of various water quality parameters, like temperature, oxygen, pH-value, redox-potential, conductivity, salinity etc., sometimes also for the analysis of total gas pressure or the water current velocity. There are either meters or sets, which measure just one parameter (single-parameter) or also several parameters (multi-parameter) available. In general, it can be distinguished between two different analysing methods for the water quality: reagent sets and sensor probes, whereby the last method measures more precisely and is more easily to use.

Reagent sets with liquid reagents or dry reagents analyse defined parameter optically with colour cards or a photometer. Analyse reagents can only be used one time and are not suitable for a continuous monitoring of the water quality.

Sensor probes with mobile handheld meter or stationary fixed station measure several parameters electronically with the meter or device. Modern, digital handy meters do not only measure and store the values, but can also have automatic alarm- and switch functions etc.

In fish- or aquaculture, the dissolved oxygen content is usually the limiting factor in production. Therefore, it should be measured and controlled regularly by an oxygen meter. In ponds, the oxygen content is usually at the lowest level at sunrise. At dissolved oxygen contents below 6 mg/l resp. 70 % oxygen saturation, an aeration of the water in order to increase recommended oxygen levels.

We offer a complete product range of handheld (handy) meters for the water analysis (of conductivity and salinity, oxygen and temperature, as well as pH-value or redox-potential etc.), from the cheap single-parameter meter with one fixed sensor (conductivity-meter, temperature-meter, oxygen-meter, pH-meter) to professional multi-parameter meters with changeable sensors (combi-meter, multi-meter), in various outfits, without or with alarm- and logger-function as well as analogue output and real-time clock (optional). Available either just as meter with sensor-probe itself or as complete sets with transport case, loading device and liquid solutions (depending on sensor-probe). Technical changes reserved!

EN



CE

Made in the European Union!

AquaTech

A-6370 Kitzbühel/Austria, Unterbrunnweg 3, Tel: +43/664-1048297, www.aqua-tech.eu

Handy Meters

Selection

Series ECO 1000



Series GMH 3000



Series GMH 5000

Series GMH 7000



Conductivity/Salinity

pH-value/Redox

Oxygen/Temperature

Multiparameter

Best value for money!

AquaTech

A-6370 Kitzbühel/Austria, Unterbrunnweg 3, Tel: +43/664-1048297, www.aqua-tech.eu

Handy Meters

Specifications

Series	ECO				GMH				GMH			GMH
Type	14xx	15xx	16xx	17xx	33xx	34xx	35xx	36xx	54xx	55xx	56xx	75xx
Analysis*	EC	PH	DO	TE	FL/HU	EC/TE	PH/RE	DO/TE	EC/TE	PH/RE	DO/TE	AL
Measured value	µS/°C	pH	mg/°C	°C/F	m/%	µS/°C	pH/mV	mg/°C	µS/°C	pH/mV	mg/°C	AL
Calculated value	TDS	-	%sat.	-	-	PSU	RH	%sat.	PSU	RH	%sat.	AL
Sensor connections	1	1	1	1	2	1	2	1	1	2	1	2
Sensor mounting	FIX	BNC	FIX	BNC	DIN	FIX	BNC	DIN	BAJ	BNC	BAJ	B+B
Display screen	2-3-lines				2x4-digits				2x4-digits			multi
Display backlight	yes				no				yes			yes
Salinity compensation	manually				manually				manually			manu
Pressure compensation	manually				manually/automatically				automatically			auto
Temperature compens.	automatically				automatically				automatically			auto
Stability recognition	no				no				yes			yes
Hold function	no				yes				yes			yes
Switch-off function	no				yes				yes			yes
Min/Max storage	no				yes				yes			yes
Logger function	no				optional				optional			yes
Alarm function	no				optional				optional			yes
Analog output	no				optional				optional			yes
Calibration history	no				optional				optional			yes
Clock (D/M/Y)	no				optional				optional			yes
Interface (PC)	no				serial				serial			USB
Loading socket	no				pin				serial			USB
Batteries included	2xAA (Mignon)				1x6F22 (Block)				2xAAA (Micro)			3xAAA
Battery duration (h)	1000	3000	3000	5000	120	150	300	500	160	1000	1000	30*
Battery status	yes				no				yes			yes
Placing/hanging bracket	no				yes				yes			yes
Push buttons	4				6				6			8
Water protection	IP65				IP54				IP67			IP67
Silicon frame	no				no				yes			yes
Device height (mm)	108				142				160			160
Device wide (mm)	54				71				86			86
Device depth (mm)	28				26				37			37
Device weight (g)*	180	130	150	130	160	230	170	300	250	250	250	300

*EC = El. Conductivity, PH = PH-value, RE = Redox-potential, DO = Dis. Oxygen, TE = Temperature, AL = All (except FL/HU), FL = Flow velocity, HU = Rel. Humidity, PSU = Salinity + TDS (+SR).

*Weight incl. batteries (without sensor probes).

Quality for reasonable prices!

AquaTech

A-6370 Kitzbühel/Austria, Unterbrunnweg 3, Tel: +43/664-1048297, www.aqua-tech.eu

Oxygen Meters

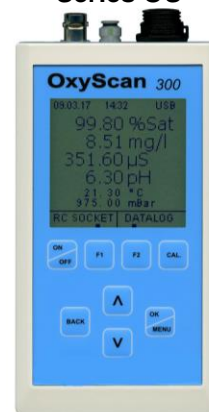
Specifications

Series	PRO			OS		HI			AS
Type	51x	52x	59x	300a	300b	980	981	982	100
Analysis*	PH/TE	EC/TE	DO/TE	DO/TE	DO/TE	DO/TE	DO/TE	AX	AL
Option*	RE	-	PH/RE	-	PH/RE	PR	PR/EC	AX	AL
Measured value	pH+°C	µS+°C	mg+°C	mg+°C	pH/mV	pH/mV	mV/mS	AX	AL
Calculated value	-	PSU	%Sat.	%Sat.	%Sat.	%Sat.	PSU	PSU	%Sat.
Sensor connections	1	1	3	1	2	2	3	3	1
Sensor mounting	BNC	FIX	DIN	DIO	BNC	DIN			DIN
Display screen	multi			multi		multi			multi
Display backlight	yes			yes		yes			color
Salinity compensation	manually			manually		manually			no
Pressure compensation	optionally			automatically		automatically			auto.
Temperature compens.	automatically			automatically		automatically			auto.
Movement activation	no			yes		no			no
Switch-off function	yes			yes		no			yes
Data storage	yes			yes		yes			yes
Logger function	yes			yes		yes			yes
Alarm function	yes			yes		nein			no
Funk switch possibility	nein			yes		nein			no
Print function	nein			yes		nein			no
Clock (D/M/Y)	yes			yes		yes			yes
Interface/Charging	USB			USB		USB			DIN
Batteries included ^x	4xAA			2xAA		4xAA			Li-Ion
Battery duration (h)	30 ^x			40 ^x		50 ^x			var.
Battery status	yes			yes		no			yes
Button sound	no			yes		no			no
Push buttons	7/9			8/10		18/20			3
Water protection	IP67			IP67	IP54	IP67			IP65
Options	-			GPS		GLP	GPS	BT	
Transport case	optional			optional		included			incl.
Device height (mm)	170			165		185			130
Device wide (mm)	78			83		93			75
Device depth (mm)	38			34		35			30
Device weight (g) *	395			300		400			

Series PRO



Series OS



Series AS



*DO = Dis. Oxygen, TE = Temperature, PH = PH-value, RE = Redox-potential, PR = PH-value and Redox, EC = El. Conductivity, PSU = Salinity + TDS, AX = All plus ISE (Ammonium, Nitrate, Chloride) and/or NFU.

^xBattery rechargeable (accumulator). *Weight incl. batteries (without sensor probes).


Consulting:

AquaTech

A-6370 Kitzbühel/Austria, Unterbrunnweg 3, Tel: +43/664-1048297, www.aqua-tech.eu

Handy Meters

Sensors

Series	ECO/GMH/PRO 1000-7000										OS	
Number ⁺	C1	C3	T1	F1	F2	P1	P2	P3	O1	OX ⁺	O2	O3
Analysis*	EC	EC	TE	RF	ST	PH	PH	RE	DO	DO	DO	DO
Display value	mS/cm	mS/cm	°C	%Rel.	m/s	pH	pH	mV	mg/l	mg/l	mg/l	mg/l
Minimal value	0	0	-70,0	0,0	0,00	0,0	0,0	-2000	0,0	0,00	0,00	0,00
Maximal value	100	1000	+250,0	100,0	5,00	14,0	14,0	+2000	20,0	20,00	50,00	35,00
Precision (%) ^x	0,5	0,3	0,2	2,0	3,0	0,2	0,2	1,0	1,5	3,0	1,0	1,0
Reaction time (s)	1	1	2	2	2	5	5	5	10	30	60	120
Temperature measure	yes	yes	yes	yes	no	no	no	no	yes	yes	yes	yes
Working temp. (°C)	0-50	0-80	0-50	0-60	0-70	0-40	0-40	0-40	0-40	0-45	0-50	0-70
Calibration points	0	1	0	0	0	1-3	1-3	1	1	1-2	1	1
Stand time (months) ⁻	12	24	60	24	12	10	8	8	3	18	36	36
Sensor material	Graph	PVC	Inox	Poly	Plast	Epoxy	Tyrel	Tyrel	ABS	PVC	Plast	Inox
Sensor diameter (mm)	12	16	3	14	15	12	12	12	12	32	15	5
Sensor length (mm)	140	145	100	120	150	130	120	120	120	206	140	200
Cable length (m)	1	1 (2)	1	1	5	1 (2)	1 (2)	1 (2)	2 (4)	3 (5)	2 (5)	1 (3)
Connection plug	FIX	BAJ	BAN	DIN	DIN	BNC	BNC	BNC	DIN	DIN	DIO	DIO
Meter type	14+34	52-75	17-55	33	33	15-75	35-75	35-75	16-75	59	300	300
Options	Non	Non	Tip	Filter	Non	Temp.	Press	Press	Cap	Press	Cable	Tip
Picture												
*Abbreviations:	EC = El. Conductivity TE = Temperature HU = Rel. Humidity FL = Flow-velocity PH = PH-value RE = Redox-potential PR = PH+Redox DO = Dis. Oxygen RH = Rel. Hardness SR = Sp. Resistivity NFU = Turbidity Units PSU = Salinity Units TDS = Dis. Solids ISE = Ion Selectivity											

⁺OX = Optical oxygen sensor. ⁻Stand time = Months until cleaning/regeneration etc.

^xPrecision in percent of measured value at a reference temperature of 25 °C.

Technical changes reserved!

If questions, please contact:

AquaTech

A-6370 Kitzbühel/Austria, Unterbrunnweg 3, Tel: +43/664-1048297, www.aqua-tech.eu

Handy Meters

Accessories



Calibration solutions – Electrolyte solutions – Control solutions



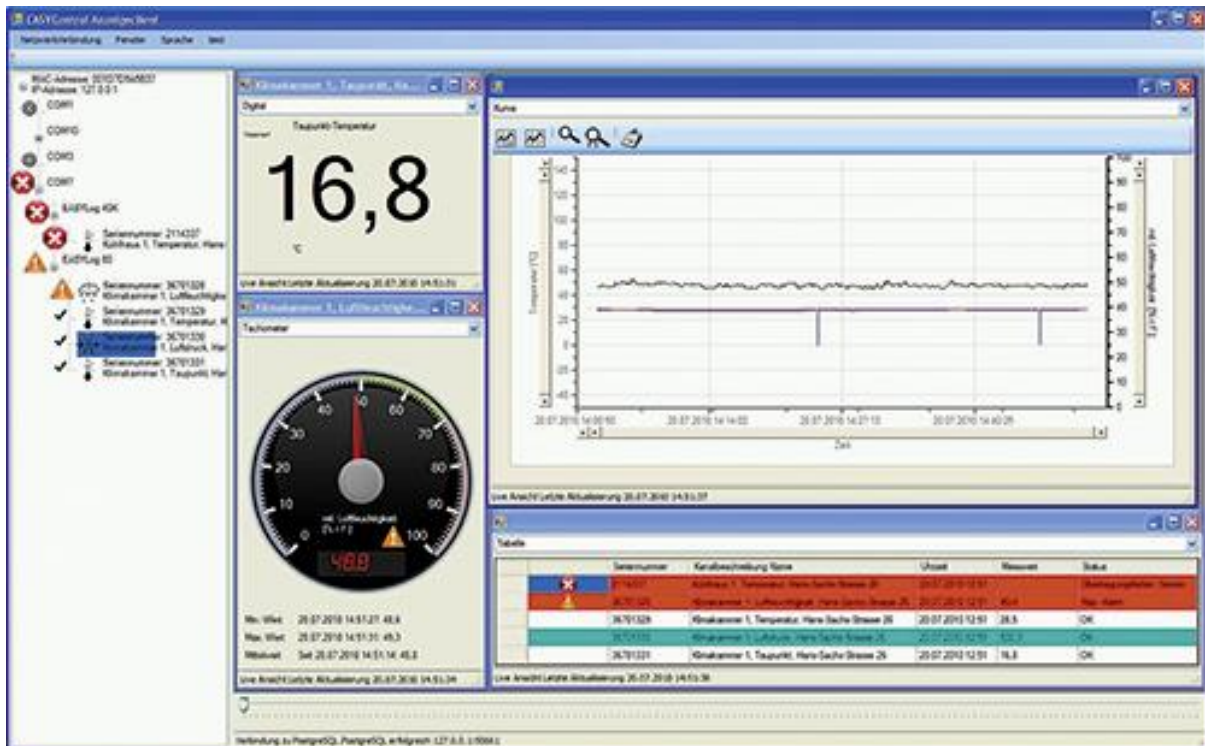
Interface converter



Transport case



Charging device



Software (Example)

Consulting:

AquaTech

A-6370 Kitzbühel/Austria, Unterbrunnweg 3, Tel: +43/664-1048297, www.aqua-tech.eu

Water Analyser

Alternatives



Photometer case-set



Analyser case-set with photometer

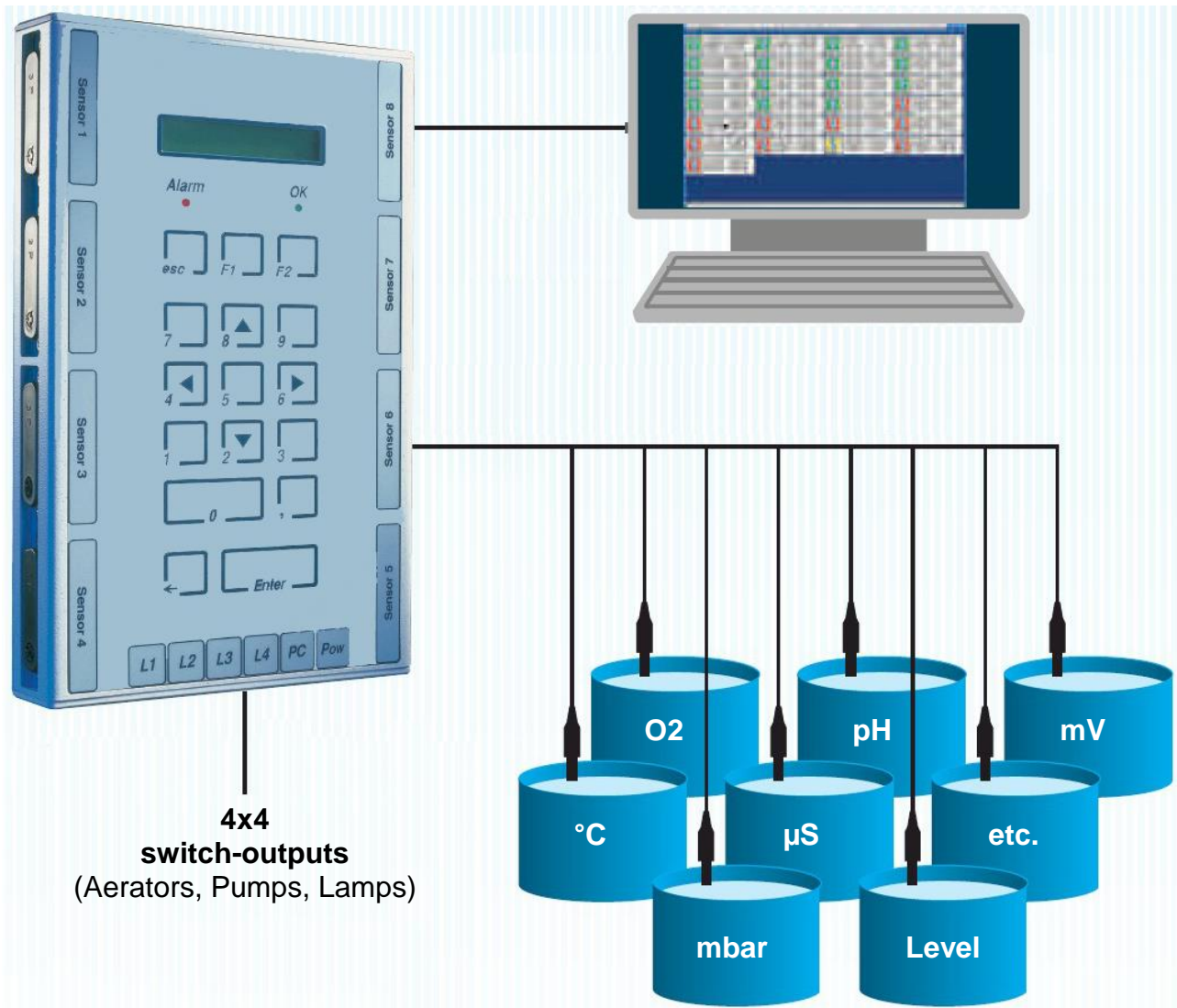
If questions, please contact:

AquaTech

A-6370 Kitzbühel/Austria, Unterbrunnweg 3, Tel: +43/664-1048297, www.aqua-tech.eu

Water Meters

Multisystem



Modular multiparameter measure-, control- and regulation-system for up to 8 measuring modules (e.g.: oxygen (O₂), temperature (°C), conductivity (μS), pH-value (pH), redox-potential (mV), as well as air-pressure (mbar) and water-stand (level), and up to 4x4 switch-outputs for an automatic regulation (on- and off-switch) of up to 16 connected aerators and pumps or lamps etc., as well as the transfer of the data to a PC. As accessory are available: protection cover-box, Ethernet-converter (RS232) and alarm-set (per SMS) and a software-package (licence). Please contact us, we are pleased to consult to your requirements.

Consulting:

AquaTech

A-6370 Kitzbühel/Austria, Unterbrunnweg 3, Tel: +43/664-1048297, www.aqua-tech.eu

Water Meters

Modules



Oxygen (optical)



Temperature



Conductivity



Level



pH-value



Redox-potential

If questions, please contact:

AquaTech

A-6370 Kitzbühel/Austria, Unterbrunnweg 3, Tel: +43/664-1048297, www.aqua-tech.eu